



INSTRUCTIONS AND PARTS LIST FOR 2 1/2 SERIES "AP38" TOOLS

BE SURE TO LUBRICATE

All Sioux Air Tools are manufactured to extremely close tolerances. Reasonable care and preventative maintenance will greatly prolong their service life.

This line of tools is designed for a long life of continuous duty on assembly lines, with a minimum of service and maintenance. Rotating parts are mounted on extra-capacity ball bearings, rotors and spindles are finished to extreme accuracy for power and low air consumption, gears and pinions are oversize and correctly hardened for quietness and long life.

Special attention has been given to ease of servicing. These tools can be disassembled and reassembled with ease.

Before connecting the tool, blow the air line to remove water and dirt which may have accumulated. This is especially important for a new line or when the line has not been used for some time.

LUBRICATION

GEARS

The gears are lubricated at the factory. Every 100 hours of operation add 1/4 oz. of Sioux Grease No. 289.

AIR MOTORS

Sioux Air line lubricators are recommended. When used adjust lubricator to deliver 2 to 4 drops of Sioux Air Motor Oil No. 288 per minute to the air tool. If tool is not used with a lubricator, place 10 to 15 drops of Sioux No. 288 oil into air inlet twice daily.

OPERATION

The air motor is started by depressing the operating lever or trigger. Motor speed may be controlled by adjusting the slotted head control which is located on the tool housing or on some models on the trigger surface.

HOSE AND HOSE CONNECTION

Air supply hose should not be less than 3/8" I.D. If extension hose is necessary, use 1/2" I.D. hose with couplings not less than 3/8" I.D.

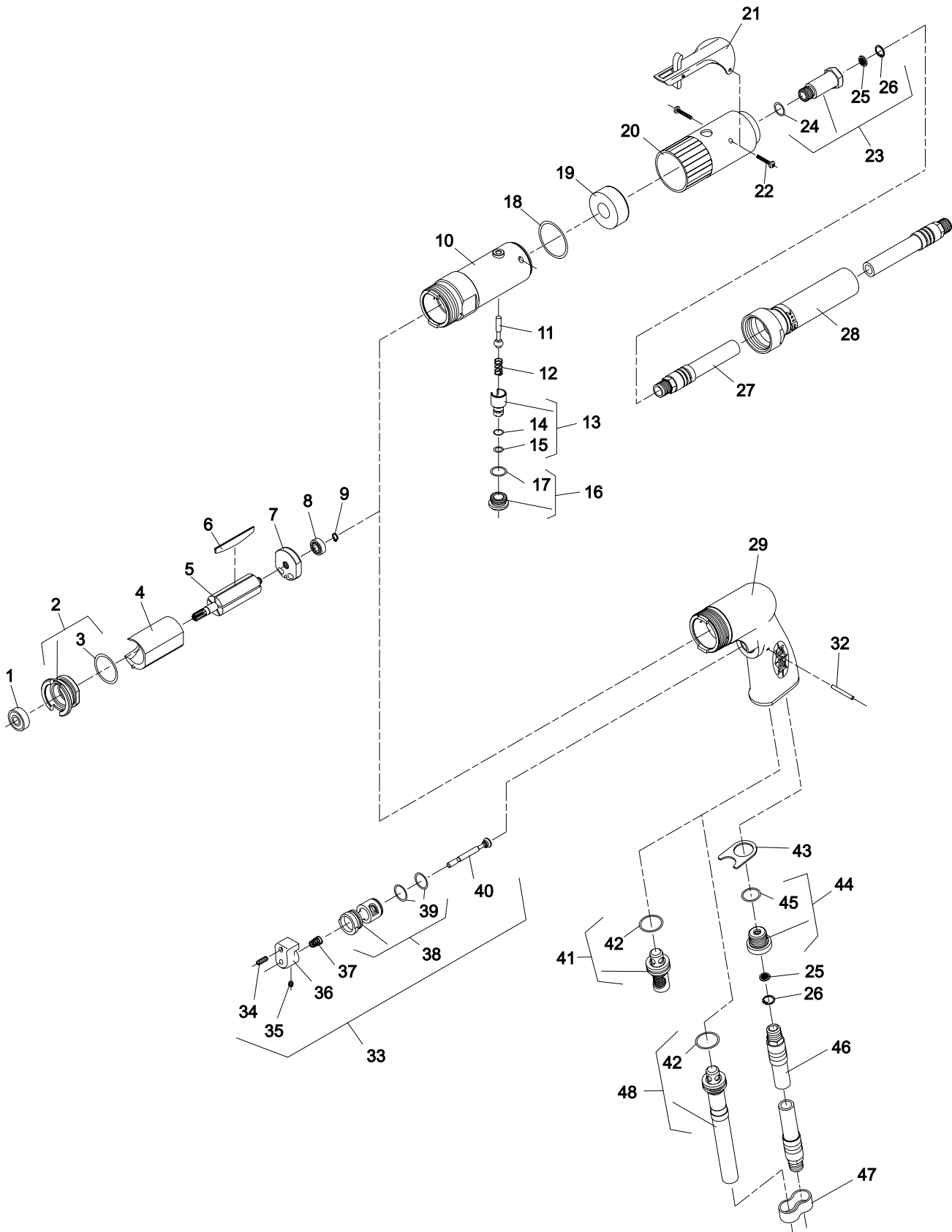
SAFETY PRECAUTIONS

1. Keep Work Area Clean: Cluttered areas and benches invite accidents.
2. Wear Proper Apparel: No loose clothing or jewelry to get caught in moving parts.
3. Use Safety Glasses: Protect your eyes.
4. Secure Work: Use clamps or vise to hold work. It's safer than using your hand and it frees both hands to operate tool.
5. Don't Overreach: Keep proper footing and balance at all times.
6. Maintain Tools With Care: Keep tools sharp and clean for best and safest performance. Follow instructions for lubricating and changing accessories.
7. Disconnect Tools: When not in use, before servicing, or when changing accessories such as blades, bits and etc.
8. Remove Adjusting Key and Wrenches: Form habit of checking to see that keys and adjusting wrenches are removed from tool before turning it on.
9. Caution: The use of an accessory with this tool not provided or specified by SIOUX TOOLS INC. may be hazardous.

SIOUXTM
TOOLS INC.



INSTRUCTIONS AND PARTS LIST FOR 2 1/2 SERIES "AP38" TOOLS





INSTRUCTIONS AND PARTS LIST FOR 2 1/2 SERIES "AP38" TOOLS

Fig. No.	Part No.	Name	Fig. No.	Part No.	Name
1.	10220	Bearing—Ball	24.	14312	Ring—"O"
2.	13550	End Plate—Front	25.	30463	Screen
3.	14342	Ring—"O"	26.	21541	Ring—Retaining
4.	64057	Cylinder	27.	63355	Ass'y—Hose Exhaust
5.	54860	Rotor (900, 1600, 2600, 5800RPM)	28.	1317	Hose—Leader
	54861	Rotor (540, 3350RPM)	29.	12660	Housing
6.	63192	Ass'y—Rotor Vane (Set of 5)	32.	40157	Pin—Dowel (1/8" x 1-1/8")
7.	10552	End Plate—Rear	33.	63359	Ass'y—Trigger (Non-Rev)
8.	10230	Bearing—Ball	34.	06459	Screw—Set (#8-32 x 1/2")
9.	21491	Ring—Retaining	35.	06458	Screw—Set (#8-32 x 3/16")
10.	64036	Housing	36.	12676	Trigger
11.	63241	Ass'y—Valve	37.	21401	Spring
12.	21427	Spring	38.	11600	Body—Valve (Non-Rev)
13.	54843	Speed—Control	39.	14378	Ring—"O" (2)*
14.	14394	Ring—"O"	40.	54222	Valve
15.	14291	Ring—"O"	41.	63545	Ass'y—Silencer
16.	54844	Retainer—Speed Control	42.	14366	Ring—"O"
17.	14309	Ring—"O"	43.	54968	Retainer—Exhaust
18.	14333	Ring—"O"	44.	54955	Adaptor—Inlet
19.	40116	Material—Exhaust	45.	14281	Ring—"O"
20.	04042	Cover—Housing	46.	1376	Ass'y—Leader Hose
21.	63258	Lever	47.	40153	Clip—Hose (3)
22.	65499	Screw—Pan Hd (Selftap) (#6-32 x 3/4 Long)(2)*	48.	63546	Ass'y—Exhaust Tube
23.	54837	Adaptor—Intake			
				2362	Aux. Handle (Not Shown)

Complete Assemblies:

- 63361 Ass'y—Pistol Handle (Non-Rev)
(Includes Figs. 25, 26, 29-48)
- 63444 Ass'y—Lever Handle (Non-Rev)
(Includes Figs. 10-20 & 22-26)

*Order Quantity As Needed

Furnish Catalog, Serial and Model Number When Ordering Parts



INSTRUCTIONS AND PARTS LIST FOR 2 1/2 SERIES "AP38" TOOLS

Double Reduction Gear Case 540, 900, 1600 RPM Units)

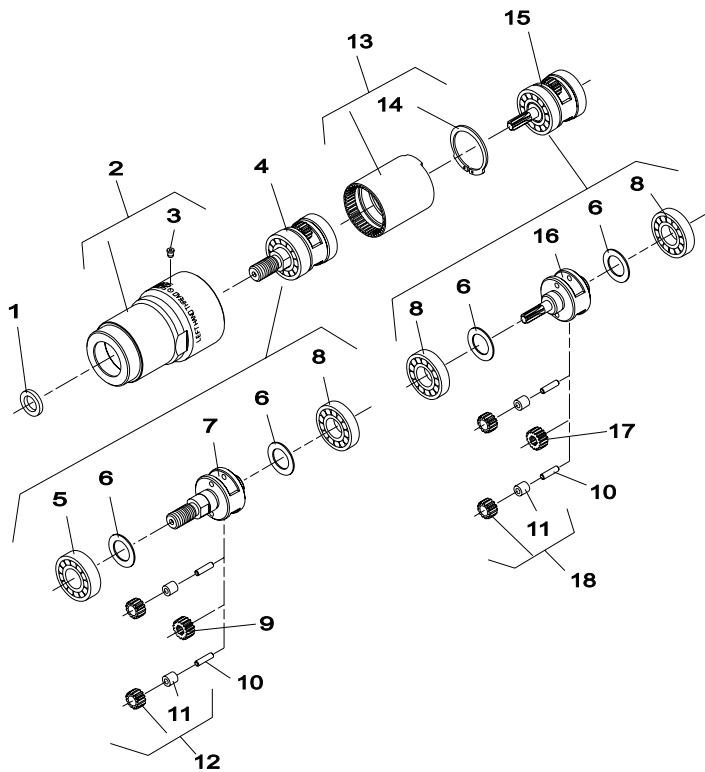


Fig. No.	Part No.	Name
1.	44122	Spacer
2.	64003	Case—Gear
3.	30375	Fitting—Grease
4.	63552	Ass'y—Planetary Reduction (1600 RPM)
	63560	Ass'y—Planetary Reduction (540,900 RPM)
5.	10228	Bearing—Ball
6.	25439	Washer(2)*
7.	64169	Carrier—Gear(1600 RPM)
	64170	Carrier—Gear(540, 900RPM)
8.	10203	Bearing—Ball(3)*
9.	19267	Gear—Pinion(1600RPM)
10.	30062	Pin(4)*
11.	10040	Bearing—Needle(4)*
12.	19314	Ass'y—Gear & Bearing(540, 900RPM)(2)*
	19331B	Ass'y—Gear & Bearing(1600RPM)(2)*
13.	19266	Gear—Ring
14.	21510	Ring—Retaining
15.	63377	Ass'y—Planetary Reduction (900RPM)
	63386	Ass'y—Planetary Reduction (540RPM)
	63392	Ass'y—Planetary Reduction (1600RPM)
16.	22702	Carrier—Gear(1600RPM)
	64159	Carrier—Gear(900RPM)
	64160	Carrier—Gear(540RPM)
17.	19267	Gear—Pinion(900, 1600RPM)
18.	19314	Ass'y—Gear & Bearing(540RPM)(2)*
	19331	Ass'y—Gear & Bearing(900, 1600RPM)(2)*

Single Reduction Gear Case (2600, 3350, 5800 RPM Units)

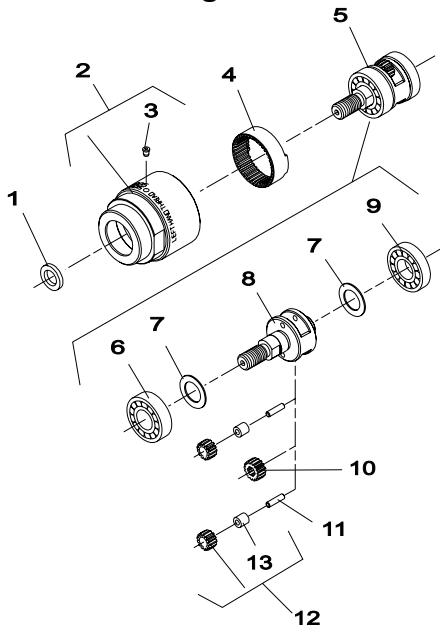


Fig. No.	Part No.	Name
1.	44122	Spacer
2.	54974	Case—Gear
3.	30375	Fitting—Grease
4.	19265	Gear—Ring
5.	63560	Ass'y—Planetary Reduction (3350RPM)
	63552	Ass'y—Planetary Reduction (5800RPM)
	63554	Ass'y—Planetary Reduction (2600RPM)
6.	10228	Bearing—Ball
7.	25439	Washer(2)*
8.	22717	Carrier—Gear (2600RPM)
	64169	Carrier—Gear(5800RPM)
	64170	Carrier—Gear(3350RPM)
9.	10203	Bearing—Ball
10.	19267	Gear—Pinion(5800RPM)
11.	30062	Pin(2)*
12.	10040	Bearing—Needle(2)*
13.	19314	Ass'y—Gear & Bearing(3350RPM)(2)*
	19317	Ass'y—Gear & Bearing(2600RPM)(2)*
	19331	Ass'y—Gear & Bearing(5800RPM)(2)*

SIouxTM
TOOLS INC.

2901 FLOYD BOULEVARD ■ PO BOX 507 ■ SIOUX CITY, IOWA 51102-0507 ■